

# BUILTECH

SUSTENA'S MONTHLY NEWSLETTER

This month,  
we're looking at

BUILDING AESTHETICS

## Minimalist Air-Conditioners

Minimalist architecture, or minimalism, is a style of design and architecture where in the subject is reduced to its necessary elements. However, the term has also come to refer to a general reduction in perceived visual clutter. It means simple, clean, and uncluttered. In minimalism, aesthetic art is reduced to its simplest form.

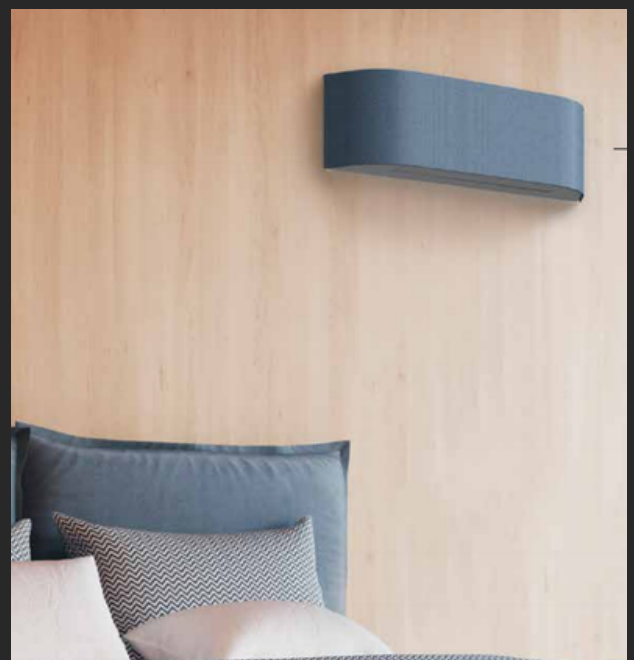
A minimalist approach to design is also beneficial for building services. A minimalist approach to lighting design will focus on a reduction in the amount of luminaires, and the total wattage used.

The objective is to reduce energy usage and maintenance costs for the building owner, whilst maintaining the aesthetic and functionality of the space.

A minimalist approach to air conditioning will focus on reducing the physical size of ductwork, minimising the number of air terminals used, and reducing air flows. Again this reduces energy usage and maintenance costs.

This approach is achieved through careful design with new building modelling software and advanced engineering techniques.

Minimalist Building Services Design is becoming more popular than ever before. Simple designs are clean and easy on the eye, they look great and are timeless in their appeal.

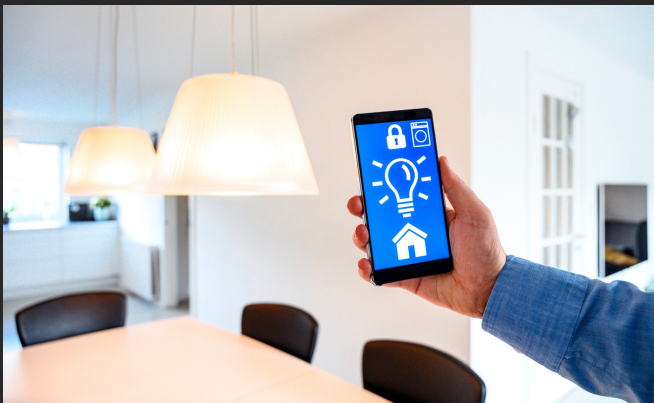


# SMART Lighting Design

Smart lighting design is an effective tool in structuring and harmonizing any environment. Light effects make all the difference for art, architecture and design alike. It does not make the quality of a product or a space any better; but it makes people experience it as if it were of higher value. Lighting is utterly essential to any project.

The lighting for buildings has to be functional, comfortable and aesthetically pleasing. Most of the times, it's a challenge to incorporate all three components in one design. There are some new materials and techniques available which can solve this dilemma.

The lighting design would weave and play together with the ceiling structure's geometry. By making use of the intelligent fusion of several kinds of light sources, the colors and atmosphere of the space could be changed easily by a single system. The installation is like a set of toys, with glass objects that bounce light from LEDs, mirrors and semi-transparent films to create a play of lights inside and outside the building, creating various artistic forms.



Read More:



From the exterior, the 'skin of our buildings have been built to stand up to wear and tear; to retain their shape and their integrity. But by not paying equal attention to what we put inside our structures, we run the risk of creating a defining characteristic of our building's "soul" or identity. As such, it pays to think about how you want your building to look fresh for years to come.

Lighting designers are usually involved with architectural projects early on since good lighting involves more than just fixtures and equipment. Some lighting designers are also engineers; however many tend to work closely with engineers as lighting design requires an understanding of how light interacts with different surfaces and materials.



SUSTENA Pty Ltd  
[www.SUSTENA.com.au](http://www.SUSTENA.com.au)  
1300 883 685  
[info@sustena.com.au](mailto:info@sustena.com.au)